

DATA SHEET

SKY13593-690LF: 2.4 to 2.5 GHz SP3T Switch

Applications

- 802.11 a/b/g/n/ac WLAN networks
- Bluetooth® systems
- Smartphones
- Connectivity modules

Features

- Positive low voltage control: 0/3.0 to 3.6 V
- Low insertion loss: 0.6 dB (typical) @ 2.4 GHz
- High isolation: 31 dB (typical) at 2.4 GHz
36 dB (typical) at 2.4 GHz (RF1 to RF2)
- Excellent linearity performance: P0.1dB = +31 dBm
- Integrated DC blocking capacitors
- Miniature, ultra-thin MLP (8-pin, 1.5 × 1.5 mm) package (MSL1, 260 °C per JEDEC J-STD-020)



Skyworks Green™ products are compliant with all applicable legislation and are halogen-free. For additional information, refer to *Skyworks Definition of Green™*, document number SQ04-0074.

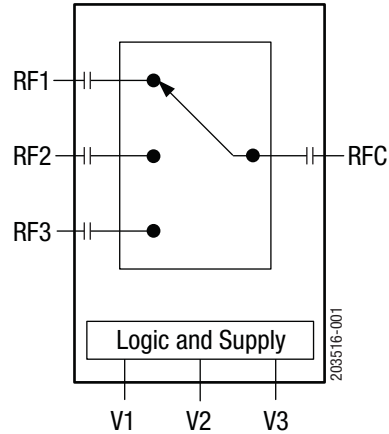


Figure 1. SKY13593-690LF Block Diagram

Description

The SKY13593-690LF is a single-pole, triple-throw (SP3T) antenna switch that operates in the 2.4 to 2.5 GHz frequency range. Switching between the antenna (RFC signal) and the RF1, RF2, and RF3 ports is accomplished with three control voltages.

The low loss, high isolation, high linearity, small size, and low cost make this switch ideal for all WLAN and Bluetooth systems operating in the 2.4 to 2.5 GHz band.

The SKY13593-690LF has integrated DC blocking capacitors, so no external DC blocking capacitors are required.

The SKY13593-690LF is manufactured in a compact, 1.5 × 1.5 mm, 8-pin Micro Leadframe Package (MLP). A functional block diagram is shown in Figure 1. The pin configuration and package are shown in Figure 2. Signal pin assignments and functional pin descriptions are provided in Table 1.

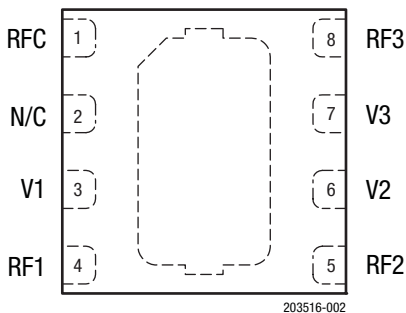


Figure 2. SKY13593-690LF Pinout (Top View)

Table 1. SKY13593-690LF Signal Descriptions

Pin	Name	Description	Pin	Name	Description
1	RFC	Antenna	5	RF2	RF port 2
2	N/C	No connect	6	V2	Switch logic control (see Table 5)
3	V1	Switch logic control (see Table 4)	7	V3	Switch logic control (see Table 5)
4	RF1	RF port 1	8	RF3	RF port 3

Electrical and Mechanical Specifications

The absolute maximum ratings of the SKY13593-690LF are provided in Table 2. Recommended operating conditions are shown in Table 3.

Electrical specifications are provided in Table 4. The state of the SKY13593-690LF is determined by the logic provided in Table 5.

Table 2. SKY13593-690LF Absolute Maximum Ratings¹

Parameter	Symbol	Minimum	Typical	Maximum	Units
Input power	PIN			+32	dBm
Control voltage	VCTL			3.7	V
Storage temperature	TSTG	-65		+150	°C
Operating temperature	TOP	-40		+90	°C

¹ Exposure to maximum rating conditions for extended periods may reduce device reliability. There is no damage to device with only one parameter set at the limit and all other parameters set at or below their nominal value. Exceeding any of the limits listed here may result in permanent damage to the device.

ESD HANDLING: *Although this device is designed to be as robust as possible, electrostatic discharge (ESD) can damage this device. This device must be protected at all times from ESD when handling or transporting. Static charges may easily produce potentials of several kilovolts on the human body or equipment, which can discharge without detection. Industry-standard ESD handling precautions should be used at all times.*

Table 3. SKY13593-690LF Recommended Operating Conditions

Parameter	Symbol	Minimum	Typical	Maximum	Units
Operating frequency	fo	2.4		2.5	GHz
Control voltage:					
Low	VCTL_L		0	0.4	V
High	VCTL_H	3.0	3.3	3.6	V
Operating temperature	TOP		+25		°C

Table 4. SKY13593-690LF Electrical Specifications¹
(V_{CTL} = 0 V and +3.3 V, T_{OP} = +25 °C, P_{IN} = 0 dBm, Characteristic Impedance [Z₀] = 50 Ω, Unless Otherwise Noted)

Parameter	Symbol	Test Condition	Min	Typical	Max	Units
Insertion loss	IL	2.4 to 2.5 GHz		0.6	0.8	dB
Isolation RFC to RF1/RF2 or RF3	ISO	2.4 to 2.5 GHz	28	31		dB
Isolation RF1 to RF2	ISO	2.4 to 2.5 GHz	34	36		dB
Return loss	RL	2.4 to 2.5 GHz		15		dB
P0.1dB compression point	P0.1dB	2.4 to 2.5 GHz		+31		dBm
Harmonics: 2fo 3fo		fo = 2.4 GHz, P _{IN} = +24 dBm, 50 Ω, V _{CTL} = 3.3 V		-52 -48		dBm dBm
Input IP3	IP3	P _{IN} = +20 dBm/tone, fo = +2.4 GHz	50	54		dBm
Error vector magnitude	EVM	802.11g, 2.4 GHz, P _{IN} = +24 dBm		-47	-43	dB
		802.11g, 2.4 GHz, P _{IN} = +25.5 dBm		-45	-42	dB
Switching speed	tsw	50% V _{CTL} to 90% RF		340	400	ns
Raise/fall time		10%/90% or 90%/10% RF		150	200	ns
Control current	I _{ctl}	V _{CTL} = 3.3 V		5	10	μA

¹ Performance is guaranteed only under the conditions listed in this table.

Table 5. SKY13593-690LF Truth Table¹

V1	V2	V3	RFC - RF1	RFC - RF2	RFC - RF3
1	0	0	ON	OFF	OFF
0	1	0	OFF	ON	OFF
0	0	1	OFF	OFF	ON

¹ "1" indicates V_{CTL} = 3.0 to 3.6 V.

"0" indicates V_{CTL} = 0 to 0.4 V.

Any state other than described in this table places the switch into an undefined state. An undefined state will not damage the device.

Evaluation Board Description

The SKY13593-690LF Evaluation Board is used to test the performance of the SKY13593-690LF SP3T Switch. An Evaluation Board schematic diagram is provided in Figure 3. An assembly Board schematic diagram is provided in Figure 3. An assembly drawing for the Evaluation Board is shown in Figure 4.

Package Dimensions

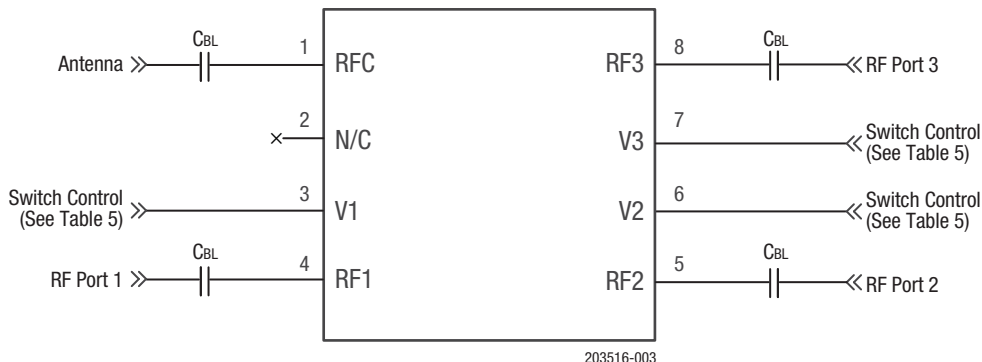
The PCB layout footprint for the SKY13593-690LF is provided in Figure 5. Typical part markings are shown in Figure 6. Package dimensions are shown in Figure 7, and tape and reel dimensions are provided in Figure 8.

Package and Handling Information

Instructions on the shipping container label regarding exposure to moisture after the container seal is broken must be followed. Otherwise, problems related to moisture absorption may occur when the part is subjected to high temperature during solder assembly.

The SKY13593-690LF is rated to Moisture Sensitivity Level 1 (MSL1) at 260 °C. It can be used for lead or lead-free soldering. For additional information, refer to Skyworks Application Note, *Solder Reflow Information*, document number 200164.

Care must be taken when attaching this product, whether it is done manually or in a production solder reflow environment. Production quantities of this product are shipped in a standard tape and reel format.



Note: $C_{BL} = 0 \Omega$ (No external DC blocking capacitors are required).

Figure 3. SKY13593-690LF Evaluation Board Schematic

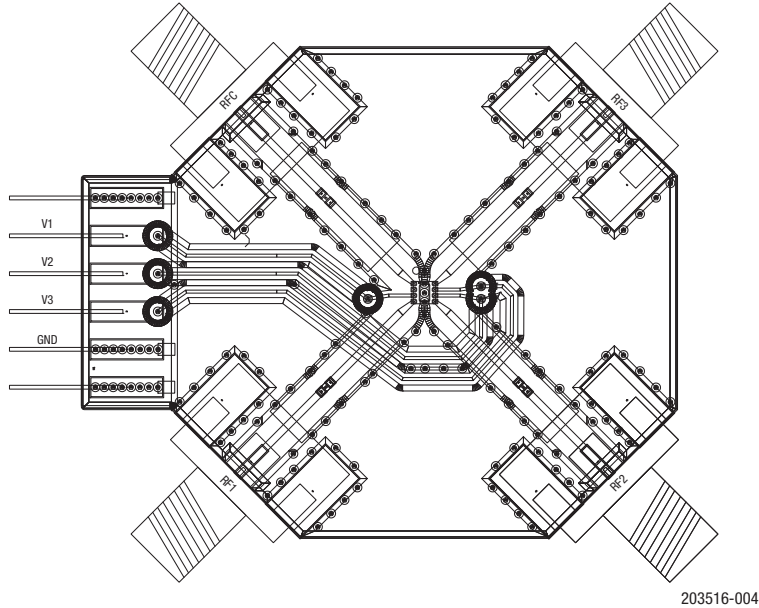


Figure 4. SKY13593-690LF Evaluation Board Assembly Diagram

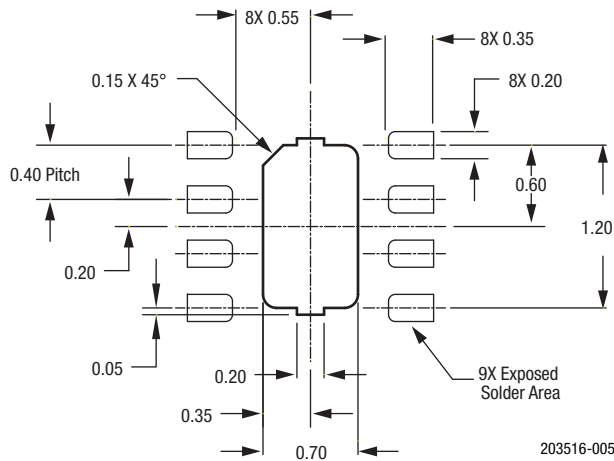


Figure 5. SKY13593-690LF PCB Layout Footprint (Top View)

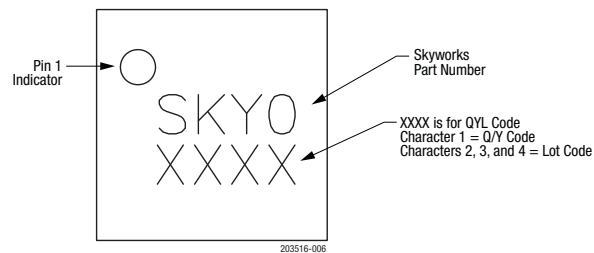


Figure 6. Typical Part Markings (Top View)

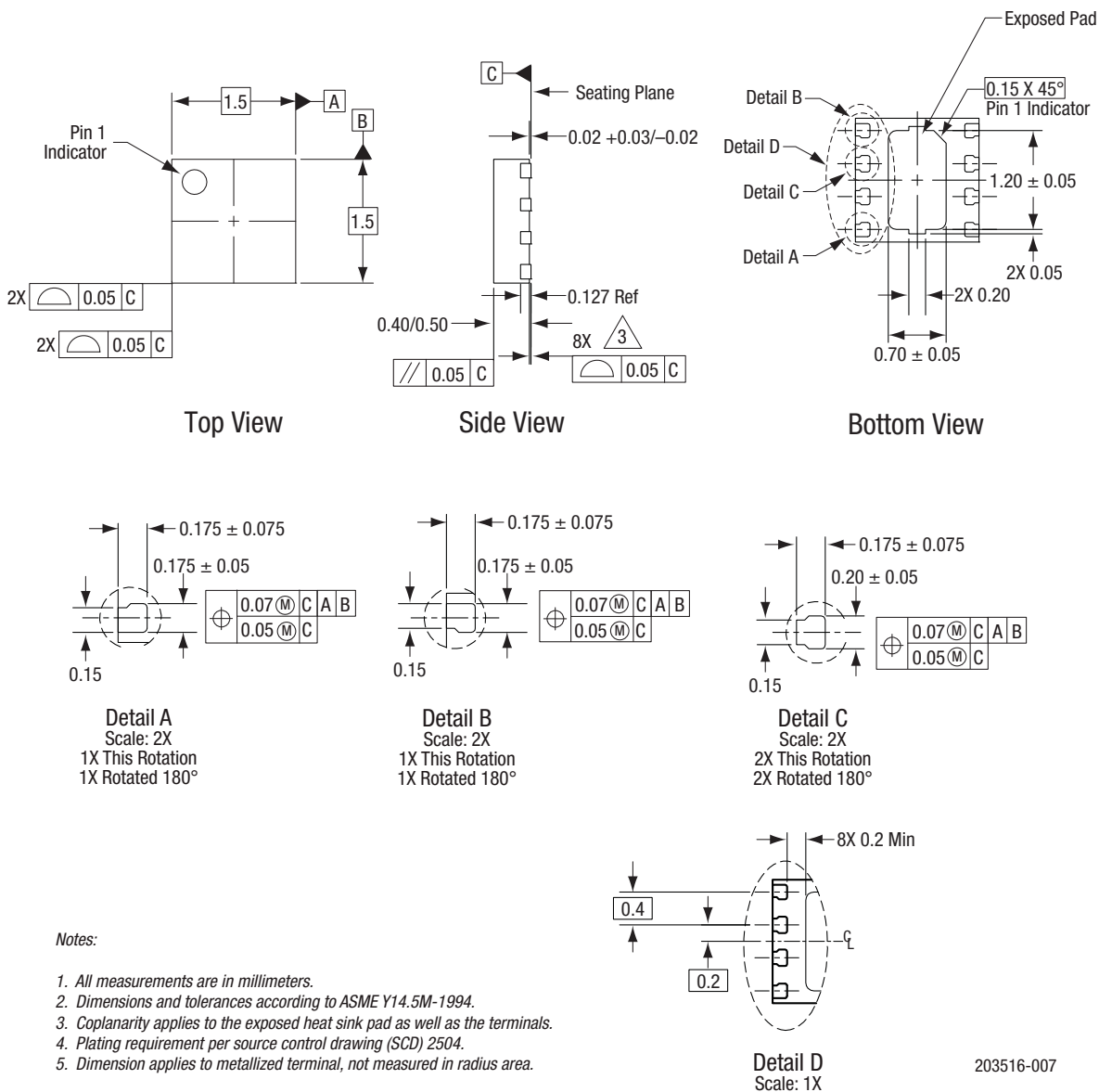
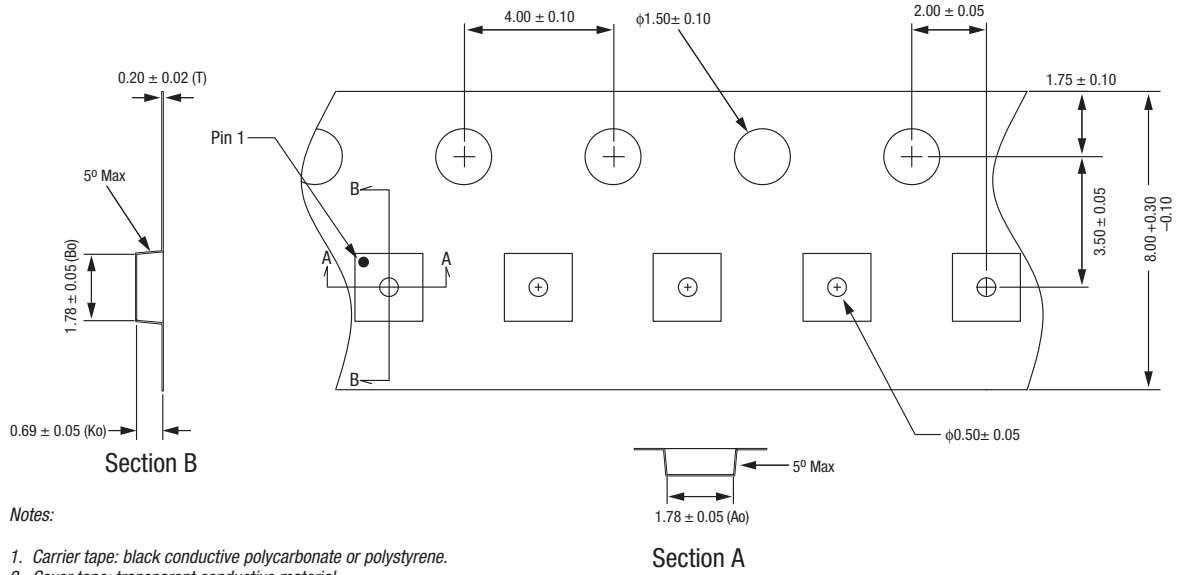


Figure 7. SKY13593-690LF Package Dimensions



203516-008

Figure 8. SKY13593-690LF Tape and Reel Dimensions

Ordering Information

Model Name	Manufacturing Part Number	Evaluation Board Part Number
SKY13593-690LF: SP3T Switch	SKY13593-690LF	SKY13593-690LF-EVB

Copyright © 2015-2016 Skyworks Solutions, Inc. All Rights Reserved.

Information in this document is provided in connection with Skyworks Solutions, Inc. (“Skyworks”) products or services. These materials, including the information contained herein, are provided by Skyworks as a service to its customers and may be used for informational purposes only by the customer. Skyworks assumes no responsibility for errors or omissions in these materials or the information contained herein. Skyworks may change its documentation, products, services, specifications or product descriptions at any time, without notice. Skyworks makes no commitment to update the materials or information and shall have no responsibility whatsoever for conflicts, incompatibilities, or other difficulties arising from any future changes.

No license, whether express, implied, by estoppel or otherwise, is granted to any intellectual property rights by this document. Skyworks assumes no liability for any materials, products or information provided hereunder, including the sale, distribution, reproduction or use of Skyworks products, information or materials, except as may be provided in Skyworks Terms and Conditions of Sale.

THE MATERIALS, PRODUCTS AND INFORMATION ARE PROVIDED “AS IS” WITHOUT WARRANTY OF ANY KIND, WHETHER EXPRESS, IMPLIED, STATUTORY, OR OTHERWISE, INCLUDING FITNESS FOR A PARTICULAR PURPOSE OR USE, MERCHANTABILITY, PERFORMANCE, QUALITY OR NON-INFRINGEMENT OF ANY INTELLECTUAL PROPERTY RIGHT; ALL SUCH WARRANTIES ARE HEREBY EXPRESSLY DISCLAIMED. SKYWORKS DOES NOT WARRANT THE ACCURACY OR COMPLETENESS OF THE INFORMATION, TEXT, GRAPHICS OR OTHER ITEMS CONTAINED WITHIN THESE MATERIALS. SKYWORKS SHALL NOT BE LIABLE FOR ANY DAMAGES, INCLUDING BUT NOT LIMITED TO ANY SPECIAL, INDIRECT, INCIDENTAL, STATUTORY, OR CONSEQUENTIAL DAMAGES, INCLUDING WITHOUT LIMITATION, LOST REVENUES OR LOST PROFITS THAT MAY RESULT FROM THE USE OF THE MATERIALS OR INFORMATION, WHETHER OR NOT THE RECIPIENT OF MATERIALS HAS BEEN ADVISED OF THE POSSIBILITY OF SUCH DAMAGE.

Skyworks products are not intended for use in medical, lifesaving or life-sustaining applications, or other equipment in which the failure of the Skyworks products could lead to personal injury, death, physical or environmental damage. Skyworks customers using or selling Skyworks products for use in such applications do so at their own risk and agree to fully indemnify Skyworks for any damages resulting from such improper use or sale.

Customers are responsible for their products and applications using Skyworks products, which may deviate from published specifications as a result of design defects, errors, or operation of products outside of published parameters or design specifications. Customers should include design and operating safeguards to minimize these and other risks. Skyworks assumes no liability for applications assistance, customer product design, or damage to any equipment resulting from the use of Skyworks products outside of stated published specifications or parameters.

Skyworks and the Skyworks symbol are trademarks or registered trademarks of Skyworks Solutions, Inc., in the United States and other countries. Third-party brands and names are for identification purposes only, and are the property of their respective owners. Additional information, including relevant terms and conditions, posted at www.skyworksinc.com, are incorporated by reference.